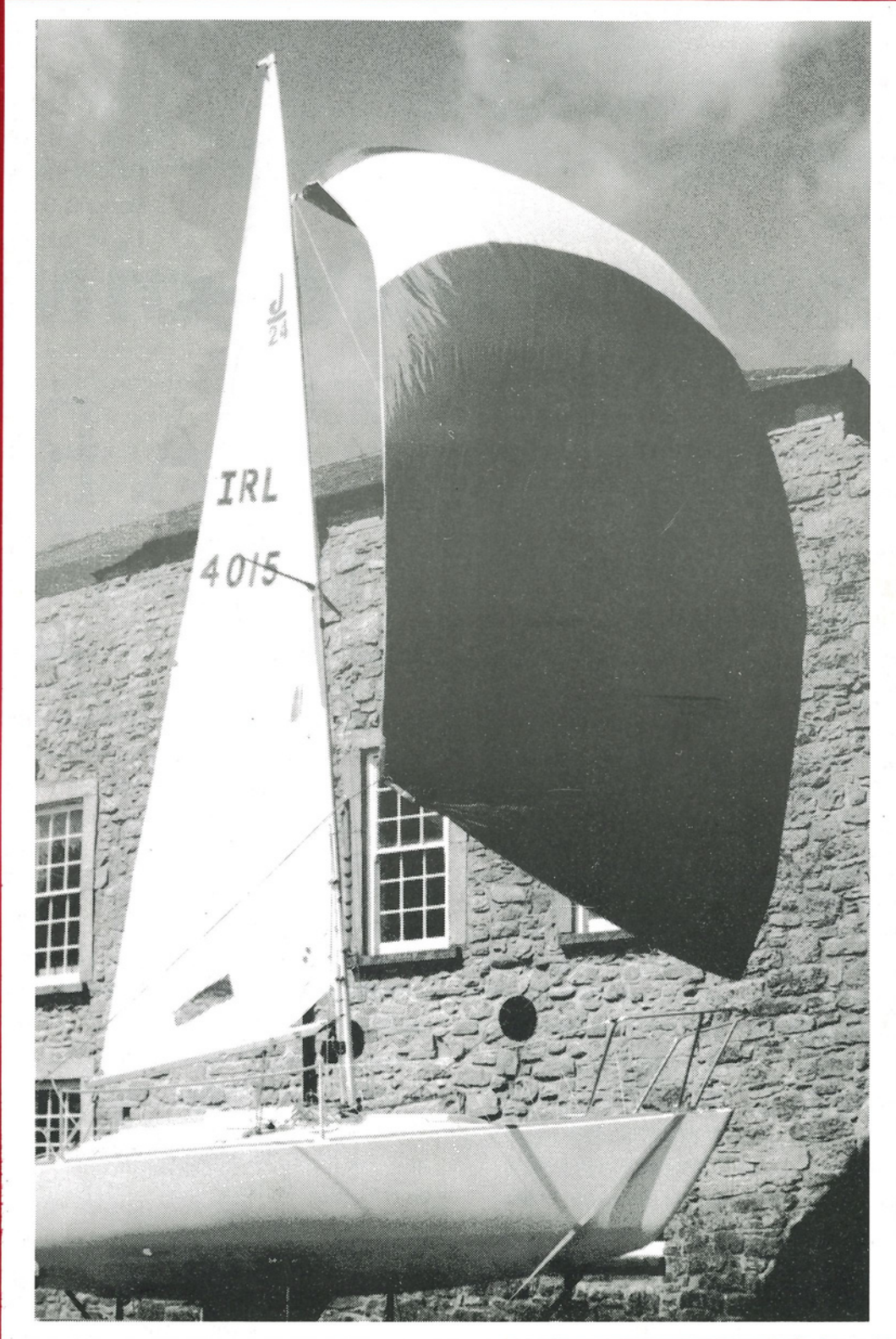


Issue 14 December 1999

# The Sentinel

ENNISKILLEN CASTLE NEWSLETTER



# Now on the threshold of a new millennium the Museum is looking forward to grasping the opportunities and meeting the challenges which lie ahead.

This has been a memorable year for the Museum in many ways, not least that we welcomed in the New Year with a Gulbenkian Award for the best smaller museum in Ireland (awarded December 1998). Following on the wake of this prestigious endorsement of the Museum and its staff was a very full programme of exhibitions, events and projects.

We have improved and enhanced our education service with the highly successful modules "Eirik Comes to Ireland" and "Eirik's Voyage of Discovery" for key stage two, both of which were based on the "Vikings and Viking Ships" exhibition. The latter module was made possible through a grant of almost £1,500 by COPUS to promote Science, Engineering and Technology Week (SET '99). For older pupils this

facilitated a trip to the Harland and Wolff Shipyard in Belfast.

The Museum has contributed to life long learning in a host of ways too, from a lecture in April on everyday life in Viking Dublin by a Dublin City archaeologist to a master class in line drawing given by artist in residence Philip Flanagan. His residency was

a first for the Museum and he made excellent use of the education room in the former Barrack Store as his studio. As part of the Blind and Visually Impaired Festival in May we provided a handling session entitled "Getting In Touch With The Past". This has encouraged other groups to use the Museum in a similar way.

The Museum retains strong ties with local history groups and has facilitated throughout the year a range of enquiries and requests. In addition Fermanagh County Museum has contributed information to a women's history project carried out by the Modern History Department, Queen's University. A publication and CD-Rom of sources relating to women in Ireland has recently been produced as the fruits of their venture. We are also currently involved with the BBC in their History 2000 project which aims to make history accessible to all and we are a listed site for the BBC's "Time Team Club" for the popular archaeology programme.

Exhibitions have always been central to the role that the Museum plays and this year has proved no exception with "Vikings and Viking Ships" bringing together selections of Viking material from Armagh County Museum, the Ulster Museum, Belfast and the National Museum, Dublin. Following this our "Crafted by

Candlelight" exhibition put on show for the first time the work of two important craft industries in this area at the turn of the last century - woodcarving from Donegal and art metalwork from Fivemiletown. The quality of craftsmanship surprised and delighted the many visitors to the exhibition, most of whom had known nothing of the existence of these early craft industries. In addition we have hosted an exhibition of art by Irish artists on tour from Ulster Television selected by their art advisor, Theo Snoddy. This exhibition was supported by a programme of

free lectures to schools and the public, given by Mr Snoddy.

Important accessions were made during the last 12 months including two copper repousse jugs made at Fivemiletown (FCM\_1999\_027/028) a silver model of a Fermanagh cot (FCM\_1999\_066) created by Bridget McBrien Linkie and a mummer's outfit made by local man Patrick Murphy (FCM\_1999\_065). All these acquisitions were 50% grant aided by Northern Ireland Museums Council (NIMC). The Museum continued to work hard to conserve and

document items in its care, the task made easier with the new laptop computer purchased with the prize money from the Gulbenkian Foundation award.

Now on the threshold of a new millennium, our hard-working team here in the Museum is looking forward to grasping the opportunities and meeting the challenges which lie ahead.

*Helen Lanigan Wood*

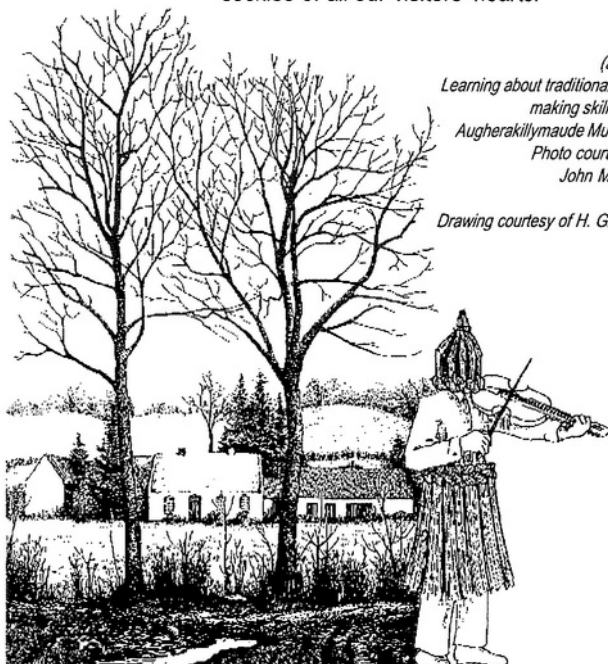
Museum Curator



# Mid-Winter Festivities

We welcomed the public to come along and beat the winter blues by joining in a special seasonal event on the evening of Thursday 10<sup>th</sup> December 1998. The programme included a performance by Augherakillymaude Mummers and demonstrations of straw hat making. This local Mumming tradition is still as popular as ever, attracting a large crowd which packed the education room to the seams. St. Theresa's Primary School choir made a lovely contribution to the evening by their rendition, in costume, of the nursery rhymes of Europe under the direction of Mrs Carmel Treacy. Members of Enniskillen Choral Society also were in a jocular mood and sang seasonal favourites with spirited musical accompaniment.

As ever the childrens' workshop proved popular and Liz Weir, the widely respected storyteller spun wonderful tales for all ages. There was plenty of mid-winter traditional fare to warm the cockles of all our visitors' hearts!



(above)  
Learning about traditional straw  
making skills from  
Augherakillymaude Mummer.  
Photo courtesy of  
John McVitty.  
Drawing courtesy of H. Glassie.

## Launch of New Education Room & Model of Enniskillen

An evening reception was held on Thursday 28<sup>th</sup> January 1999 to celebrate recent additions to the Museum site. A few months previously the Environment and Heritage Service (EHS) completed a sympathetic restoration of the former barrack store and generously gave the room over to the Museum. In addition the room has been fitted out with custom made furniture and display cases designed by Roy Service, of the Ulster Museum and grant aided by the Northern Ireland Museums Council (NIMC).

The room is now used for a range of activities including education programmes and

public lectures, workshops, exhibitions, special events.

The Museum also celebrated the completion of a model of Enniskillen commissioned by the Environment and Heritage Service which is situated on the top floor of the Castle Keep. This model shows the town c.1835 based on an unpublished map of 1833 and old 19<sup>th</sup> and 20<sup>th</sup> century photographs. With the use of a fibre optic lighting system, key buildings in the model town can be located by the visitor. Keenan Model Makers, Belfast were responsible for creating this model.

# MICROPHONES

and

# Memories

An Oral History Research Project

A mountain of memories have been recorded on tape by Joan Duffy,

researcher of the Clogher Historical Society's

Women's Oral History Project. She has travelled the length and breadth of the county collecting stories and reminiscences about Fermanagh in the past.

The women interviewed as part of this project vary in age from their 70s to 101. Joan has collected oral testimony from a very interesting range of people, who convey a great deal of information about the different social, cultural and religious customs found in Fermanagh.

At present we are endeavouring to get the tapes transcribed so that they can be available for research and education programmes. An exhibition relating to this project will also be arranged at a future date.

This project is managed by a panel of Clogher Historical Society members and guided by Museum Development Officer, Bronagh Cleary. It is funded by Fermanagh District Council and the Fermanagh District Partnership under the Special Support Programme for Peace and Reconciliation. □

## Best Value Focus Group

On 12th March 1999 a focus group meeting was held to discuss the service that the Museum provides to the local community. Members of the public were selected representing a wide range of users. This venture was initiated under a local government review called "Best Value". All issues raised at this first meeting in March were assessed and resulting progress discussed at a second meeting of the group held in November.

As the name suggests this event "Getting in Touch with the Past" allowed participants to have a "hands on" experience at the

collection of artefacts. These items including an old fashioned shaving kit and irons brought back more than a few memories!

Both these sessions were taped for the

along to a handling session with members of the Museum staff. A morning or afternoon spent in this way is an ideal and pleasant way of making a direct connection with our shared heritage. Please telephone 028 66 325000 to make a booking.

## Getting in Touch with the Past

Museum. It took place on the afternoon of Saturday 15<sup>th</sup> May 1999 and was Organised by Museum Development Officer Jayne Olphert and Education Officer, Kellie Beacom as part of the Blind and Visually Impaired Festival of 1999. The event centred around the Vikings and Viking Ships exhibition and the handling session involved Viking replica artefacts and costume. After a break for tea and scones the participants enjoyed a second handling session with items from our "Life in the Recent Past"

Fermanagh Talking Newspaper.

The Museum repeated this event on the morning of Tuesday 29<sup>th</sup> July when a group of 8- 11 year olds from the Royal National Institute for the Blind, Belfast also enjoyed a handling session based on the Viking replica artefacts.

Enniskillen Castle aims to increase access and enjoyment for all its users. Any group is welcome to make a booking and come

"Getting in touch with the past" was supported by advice and staff training from the Blind Centre in Belfast and Sperrin Lakeland Trust. Valuable assistance was also

generously provided by Mr Eugene Kelly and others who are involved with the Fermanagh Talking Newspaper in Fermanagh. □

*Below: Participants during 'Getting in touch with the Past' handling session at Enniskillen Castle.*



Patrons, officers and committee members elected at the inaugural meeting of the Association of Friends of Fermanagh County Museum on 28 February 1999.

### Patrons

The Earl of Belmore  
Mr. Gerry Burns (co-opted March 1999)  
Most Reverend Joseph Duffy, Bishop of Clogher  
Miss Joan Trimble

### Officers

Chairperson - Mr Peter Duffy  
Vice Chairperson - Miss Joan Hill  
Secretary - Mrs Jean Agnew  
Treasurer - Mr Sam Robinson

### Committee Members

Mr Michael Clarke  
Mrs Bernadette Layden  
Mr Joe O'Loughlin  
Ms Julia Switzer  
Mr Gordon Johnson  
Ms Mary Herbert

### Ex-officio Members

Mrs Helen Lanigan Wood, Museum Curator and designated staff member of Fermanagh County Museum.

# Seeing OUT Loud



From 26 - 30 July the Museum became a hive of activity during an event aimed at 7 - 11 year olds entitled "Seeing Out Loud". This was part of a nation wide initiative to raise children's awareness of the visual arts in museums and galleries. This was the second year that Enniskillen Castle has taken part. Last year's workshops centred around the work of Kathleen Bridle. For Gallery Week 1999 children were entertained by a puppet show relating a fairy story "The Sorcerer's Box" based on the fine

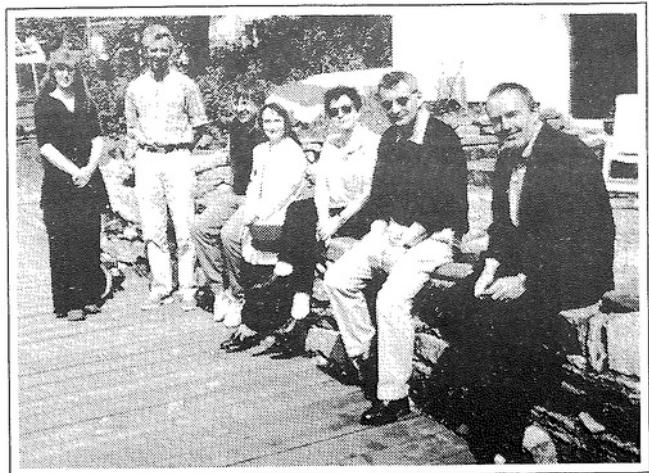
## A Study Trip To Norway

Museum curator, Helen Lanigan Wood was one of six curators from local and regional museums in Northern Ireland who were invited to western Norway in May for a study trip grant - aided by the Northern Ireland Museums Council. The host was Dr. Roy Hoibo, director of Ryfylkemuseet in northern Rogaland who organised an intensive five day programme of museum visits starting with the national museums in Stavanger and taking in some of the rural museums of Jaeren to the south before heading for the beautiful fjord lands of Ryfylke.

There were ample opportunities to meet with professional staff and discuss common concerns. The group also enjoyed the hospitality of the Mayor and local council in the town of Sand and the chance to meet members of the local museum's management board. With every detail superbly organised, even the lovely spring weather, it was by all accounts a most stimulating and worthwhile experience for all concerned. Among the unforgettable elements were boat journeys through the fjords, old farmsteads preserved as museums in their natural habitats, wonderful English spoken by every Norwegian and adventurous breakfasts of smoked salmon, prawns and reindeer meat!

*Below: Museum curators in Norway, (from left) Dr. Susan Mannion, Craigavon Museum Services, Dr Roy Hoibo, director of Ryfylkemuseet, Ian Wilson, North Down Heritage Centre, Lesley Simpson, Down County Museum, Helen Lanigan Wood, Fermanagh County Museum, Brian Mackey, Lisburn Museum and Gaute Berge Nilsen, deputy director of Ryfylkemuseet.*

*The photograph was taken by Dr Brian Turner, director of Down County Museum who liaised with Dr Hoibo in organising the visit.*



Sligo embroidery panels on loan from the National Museum of Ireland for the Crafted by Candlelight exhibition and also on the Maguires of Enniskillen Castle. Participating children then created a dragon mask and this was followed by a treasure hunt with clues, both inspired by the story. □

# Erne Sailing



On Bank Holiday Monday 31<sup>st</sup> May 1999 the Museum hosted a joint event with Lough Erne Yacht Club. This event organised by Museum Development Officer, Jayne Olphert was to mark Museums Week which had travel as one of its themes this year.

Four hundred years ago the Gaelic bard Timothy O'Higgins wrote about the forest of sailing boat masts at Enniskillen Castle seat of the hospitable Maguires. Echoing history on Bank Holiday in the yard was a fairy class keel boat "Storm" built in 1906, a GP14, a Mirror and a little Topper dinghy and a J/24 keel boat "Jeriatric" from Lough Erne Yacht Club with spinnaker set.

Our resident Viking couple Ethel and Eirik (alias

education officer, Kellie Beacom and local model maker, Gordon Johnson) told tales of Viking ships and travel. In addition there was an art workshop for young children, an impressive display of Lough Erne Yacht Club material and the public's last chance to see the very successful Vikings and Viking Ships exhibition.



RNLI which is celebrating 175 years this year also attended

Erne Sailing complete with display stand.

We were very lucky with the weather and had a great turnout with 150 visitors over the course of the afternoon. □

*Above: Education Officer Kellie Beacom dressed as Ethel the 10<sup>th</sup> century Viking woman and her "husband", Eirik - local model maker Gordon Johnston, standing by 1906 fairy class keel boat "Storm".*



## European HERITAGE OPEN DAYS

European Heritage Open Days took place this year on Saturday 11<sup>th</sup> and Sunday 12<sup>th</sup> September 1999. This is an annual Europe wide event held to promote public appreciation and awareness of interesting historic and modern buildings. Ulster has its own unique built heritage and Enniskillen Castle took part by opening free of charge over the weekend. This allowed visitors to view the then current UTV Irish art exhibition as well as permanent exhibitions in the County and Regimental Museums.

## EVERYDAY LIFE in VIKING DUBLIN

Dublin City archaeologist Daire O'Rourke travelled to Enniskillen Town Hall on the 29<sup>th</sup> of April to deliver a lecture entitled Everyday Life in Viking Dublin. A well illustrated talk, it turned out to be a fascinating account of the early Viking settlement largely based on the results of the archaeological excavations in the city in recent years.



## Temporary Documentation Assistant

For four weeks this summer the Museum benefited from the work of temporary member of staff, Rodney Whyte, who established a map catalogue and cleared a large backlog of retrospective documentation. The Museum wishes him well in his postgraduate studies in accountancy at Queen's University, Belfast and gratefully acknowledges the financial support of NIMC for this post.



# Acquisitions & DONATIONS

1999 proved a fruitful year for new additions to the collections. Among the key pieces acquired this year were:

## Handmade Turf Barrow

A hand made turf barrow (FCM\_1999\_031) from Richard Watson. It was made by Mr Gamble who lived between Belcoo and Garrison approximately fifty years ago.

## Traditional Mummers' Outfit

A mummers' outfit was commissioned by the Museum from local man Mr Patrick Murphy (FCM\_1999\_065). The outfit came complete with a "devil's tail" on the headgear which is the distinctive sign of a traditional Fermanagh mummers' outfit. This acquisition was 50% grant funded by Northern Ireland Museums Council (NIMC).

## Shay Nethercott photographic collection

Below is one of the many photographs donated to Fermanagh County Museum by Mr. Shay Nethercott. The Nethercott collection contains photographs of local people and local places.



*Left: Derrylin Gaelic Football Team 1974-75  
Back row: Thomas Quinn, Manus Corrigan,  
Sean Murphy, Vincent Martin, Seamus  
Quinn, John Murray, Martin McBrien, John  
Murphy, Manus Curry, Gerry Maguire,  
Gabriel Maguire.  
Front row: Brian Cassidy, Joe Brown, Ray  
Cassidy (Captain), Seamus Curry, Vincent  
Maguire, Padraig McGovern.*

*Above: Early Christian Bronze Bell.  
(FCM\_1980\_067)*



## Early Christian Bronze Bell

When Fermanagh County Museum opened in 1977, one of its prize exhibits was a beautiful bronze bell (FCM\_1980\_067) lent by the collector, William Kearney of Dublin. Probably 9th or 10th century, it may have belonged to a monastery in Co. Tyrone. It was bought by William Kearney in 1976 at an auction at Favour Royal, Augher, Co. Tyrone, the home of the Moutray family.

Mr. Kearney always took an interest in the progress of the Museum, calling to visit whenever he travelled in the north. After his untimely death last year we discovered that he had left us the bell in his will and we were very touched when his widow Mrs Monica Kearney wrote to tell us of the bequest. It was a gesture very typical of the generosity of William Kearney and his gift is very much valued by the Museum and will be remembered with gratitude.





## Fivemiletown art metal work jugs

Two matching fine patented copper jugs decorated with repoussé swimming fish (FCM\_1999\_027 & \_028). These jugs are the work of the art metal work industry which flourished in Fivemiletown from 1892 until the beginning of the World War I. Set up by Mary Montgomery, Enniskillen - born wife of the landowner, the industry provided much needed employment for young men in the Fivemiletown area. Due to the high quality craftsmanship of these jugs, it has been suggested that John Williams, an experienced artist in repoussé metal work, was involved in their making. Williams, an English artist, did design work for the Fivemiletown industry in its early years and in the Autumn of 1893, 1894 and 1896, he came to Fivemiletown to teach the craft.

This purchase was 50% grant aided by Northern Ireland Museums Council (NIMC).

*Left: Copper jug from turn of the century art metal workshop, Fivemiletown, Co Tyrone. (FCM\_1999\_027 & 028)*

*Below: Silver ferry cot created by Bridget McBrien Linkie in 1986. (FCM\_1999\_066)*

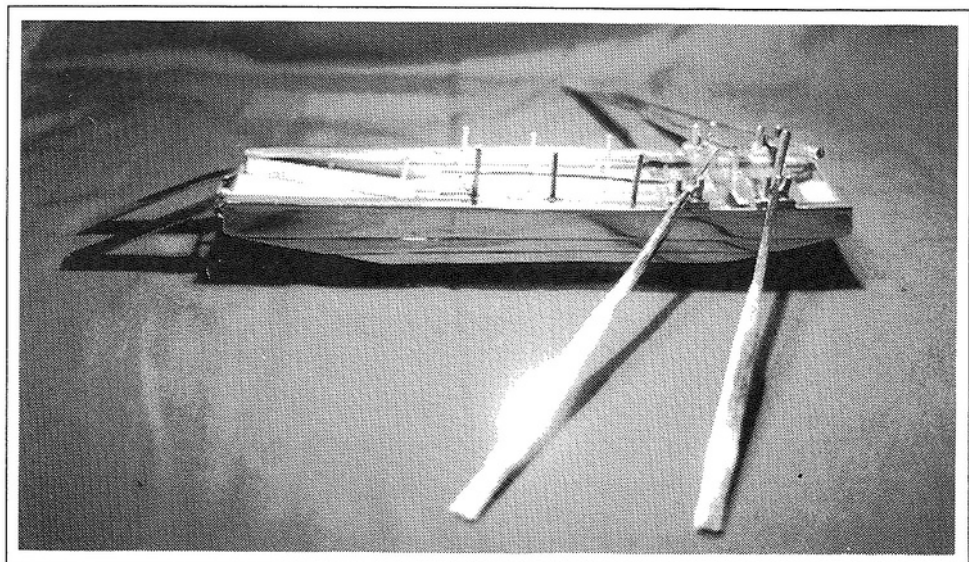


## Silver Cot made by Fermanagh -born Craftswoman

The Museum recently purchased, with the help of a grant from the Northern Ireland Museums Council (NIMC), a unique piece of silverware in the form of a Fermanagh cot (FCM\_1999\_066). It was made in 1986 by the late Bridget McBrien in memory of her father, John. John McBrien of Corratistune used to ferry livestock by cot across the Upper Lough Erne prior to the building of the bridges at Trasna Island in the 1930s.

Bridget (Bea) McBrien Linkie, who sadly died last year, was born in Corratistune but spent her married life in Middlesex. She studied silver -smithing at Harrow School of Art and her work includes a gold and silver chalice which is still in use in the Catholic church in Derrylin and a silver water carrier based on a traditional design used in Fermanagh for transporting barrels of water for cattle.

Bea had vivid memories of her father's ferry cot and in the early 1980s when she conceived the idea of making a model of it, went to great trouble to ensure that all the details were correct. The curator was able to find her a plan of a Fermanagh cot for reference purposes and so began a friendship which lasted until Bea's untimely death last year. Bea came to Fermanagh for the inauguration of The Maguire at the mound of Cornashee in Lisnaskea and she returned a few months before her death, bringing the silver cot with her. It will go on display shortly in memory of both John McBrien and the artist herself.



## Local Heroes: Sporting Fermanagh

October 29 1999 - January 2000

## Launch of Millennium Sculpture made by Philip Flanagan.

January/February 2000

## Contemporary Art in Fermanagh

Painting, photoworks and sculpture

28 January - 10 March

## Home Front

A World War II exhibition from the collections of the National Museums and Galleries of Northern Ireland, coinciding with visit from a Canadian Squadron.

24 March - 17 June 2000

# diary

## "Earthbound"

Education programme  
Science for key stage 2.

February - May 2000

## Science Week

A week of public events  
exploring Science,  
Engineering and Society.

17, 20 - 24 March 2000

## Museums and Galleries Month 2000

Education Welcome Days.

11 and 18 May 2000

## International Museums Day

Free admission.

18 May 2000

## Local Identities Exhibition

Supported by Northern Ireland Museums Council and the Community Relations Council.

Explores facets of local identity within Northern Ireland with special reference to Fermanagh.

30 June - 30 September 2000

## Art Exhibition from IMMA

Selected by Fermanagh and Leitrim women from the collections of the Irish Museum of Modern Art in Dublin.

October - November 2000

## Fermanagh Craft Consortium and Enniskillen Photographic Society Millennium Exhibition.

December 2000 - January 2001

# Request for Donations

Have you ever thought of contributing to your local community in a novel way? Well this your opportunity! The Museum has a small acquisition fund but depends heavily on the generosity of the public. We always welcome material relating to the county, but this year in particular we would be very grateful to receive by donation or on loan material for some of our forthcoming exhibitions.

We would be interested in the following material:

- Items representative of minority communities in Fermanagh, specialised food preparation articles and serving dishes, religious artefacts, specialised greeting cards, items of clothing associated with a particular culture.
- Items of clothing associated with the period of the Second World War (1939 - 1945).
- Personal items relating to women's experiences of living in Fermanagh during this century - love letters, diaries, letters, telegrams or other documents relating to a major event in the life of an individual, school reports etc.
- Political material from the period 1950-1985 - leaflets, pamphlets, posters etc.



⇐ These events are correct at the time of printing. We reserve the right to vary details of the programme. Enniskillen Castle intends to organise other events in the forthcoming months. Details of these will be listed in the local press and the monthly 'What's On' leaflet produced by Fermanagh District Council.



*Left: Key Stage 2 pupils enjoy making their own Viking brooch as part of the 'Eirik comes to Ireland' education module.*

# Education at the Castle

## **Secondary School Visit to Harland and Wolff, Belfast**

On Friday 12<sup>th</sup> March 1999 a bus load of local secondary school children to a site visit of the world famous company Harland and Wolff in Belfast. The trip organised by Museum Development Officer, Jayne Olphert was open to 16 - 17 year olds and the aim was to encourage students to consider third level education and a career in engineering or an allied field.

The company was very helpful and the students got an in - depth tour of the site which was immense in scale. It is not everyday that you get the chance to stand beside a dry docked oil rig! Then students were given a talk on the different subsidiary businesses within the complex and how the company will be meeting the challenges of the future. A very enjoyable and informative day was had by all.

Enniskillen Castle would once again like to take this opportunity to thank all those who contributed to making these modules such a success: Cynthia Gamble, Science and Information Technology advisor, Western Education Board and Aidan Walsh, Viking specialist as well as director of Northern Ireland Museums Council, staff of Armagh County Museum (NIMC), Dr. Tom Mason, Director, Armagh Planetarium, Staff of Share Centre, Lisnaskea, Gordon Johnson, Bob Maher, Portora Royal School and Harland and Wolff.

## **Eirik Comes to Ireland and Eirik's Voyage of Discovery**

Each year the Museum mounts an exhibition specifically designed for schools and tailored to the requirements of the National Curriculum. This year Vikings and Viking Ships (February - May 1999) acted as a backdrop to two very successful education modules entitled "Eirik Comes to Ireland" and "Eirik's Voyage of Discovery".

Eirik comes to Ireland was devised by education officer, Kellie Beacom and museum development officer, Jayne Olphert.

This module ran for the full exhibition period and was designed to complement one of the mandatory history modules in Key Stage II. Eirik was a fictional character created by the Museum's education staff. Work books, role play and a Viking brooch workshop formed the core of this module and a teacher's pack was produced for preparation and follow up work. Children had the opportunity to meet Ethel, Eirik's wife in Norway in the year 900 AD.

Schools booked for this module from as far away as Ballymoney and Bushmills in Co. Antrim.

## **Eirik's Voyage of Discovery 15, 16, 18 March 1999**

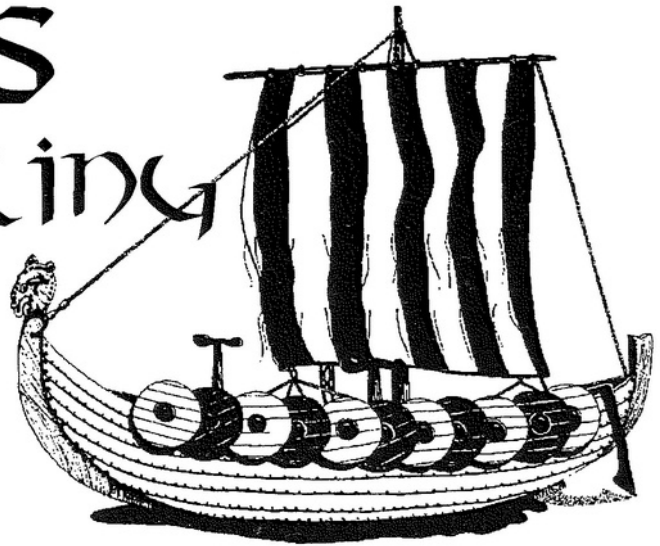
For Science, Engineering and Technology Week (SET'99) the Museum developed with grant aid a module which explored science and technology themes in the National Curriculum at Key Stage II. With help from local model maker Gordon Johnson dressed as Eirik and boat enthusiast Bob Maher, the workshops allowed children to compare and contrast modern boat building in Fermanagh with Viking shipbuilding skills. Activities included investigating properties of materials by using float tanks and making their own compasses. The Share Centre, Lisnaskea kindly loaned their replica long ship which was moored off Castle Island for the event. As with Eirik Comes to Ireland there was an accompanying teacher's pack and work sheets. Local schools who were not coming on EMU trips had their transport to and from the Museum paid for.

These two modules together were attended by almost 2000 children.

**set99\***  
exploring science  
engineering  
and technology

# Vikings AND Viking Ships

After closing for a short period of refurbishment in January 1999, Enniskillen Castle re-opened with a new exhibition, Vikings and Viking Ships.



The exhibition organised in association with Armagh County Museum was launched on the 4th of February 1999 by Dr Greer Ramsey deputy Curator of Armagh County Museum.

Dr Ramsey traced the history of Viking settlement in Ireland describing how the Vikings had originally arrived as raiders. Later, they traded with the local populace until eventually they settled in Ireland as farmers and trades people. Subsequently they adopted the Christian burial customs of the Irish and stopped burying artefacts with their dead. This development meant that burials lost their distinctively Viking character and became indistinguishable from those of the rest of the population.

It also incorporated an exhibition from the Danish Cultural Institute about the historical legacy of the Vikings and about Viking raids and ships.

The educational programmes developed for this exhibition were particularly successful and attracted bus loads of children from near and far. □

This exhibition included display panels and many artefacts from Armagh County Museum as well as Viking material from the National Museum of Ireland and the Ulster Museum.



*Right: At the launch of the exhibition Viking and Viking Ships are from left, Bronagh Cleary, development officer, Catherine McCullough, curator of Armagh County Museum, Kellie Beacom, education officer, and Dr Greer Ramsey, Armagh County Museum.*



## UTV - 20<sup>th</sup> century contemporary Irish Art Exhibition

A break from tradition occurred at lunch time on Wednesday 8 September 1999. Instead of the usual evening exhibition launch, a light lunch and refreshments were served at the opening of the UTV art exhibition courtesy of Ulster Television. UTV managing director, Mr Desmond

Smyth, officially opened the exhibition of paintings and drawings from the UTV art collection. He said that although this was the second time that UTV had hosted an exhibition at Fermanagh County Museum, an entirely new range of paintings was shown on this occasion. UTV could not be accused of showing any repeats at Enniskillen!

Chairman of Fermanagh District Council, Mr Derrick Nixon, thanked UTV for lending the works of art for this exhibition as well as for their generosity in providing the necessary organisation and financial support to present the exhibition to the public. Mr Theo Snoddy, Art Advisor at UTV, explained that there were works of art on display from 31 contemporary artists including T.P. Flanagan, Brian Ferran, Markey Robinson, Gerard Dillon, William Connor, Daniel O'Neill, Carolyn Mullholland, Joan Mallon, Sheila



Left: At the launch of the exhibition *Crafted by Candlelight* are from left, Mr Derrick Nixon, chairman of Fermanagh District Council, Paul Larmour, author of 'Irish Arts & Crafts Movement in Ireland', who opened the exhibition, Helen Lanigan Wood, museum curator, Anne Loane and Captain Robert Lowry who both loaned items for the exhibition. Photograph courtesy of Impartial Reporter.



# Crafted by Candlelight

He went on to describe how Everina Sinclair, was the driving force behind a wood carving industry in Donegal at the end of the 19th century. A gifted woodcarver herself, she set about teaching these skills to local people to enable them to supplement their income. Some of her designs were inspired by Celtic art but she was also attracted to Gothic, Renaissance and Moorish woodcarving styles.

The exhibition also included a set of four embroidered panels from Co. Sligo made in the same period

and also heavily influenced by the arts and crafts movement. These panels were kindly loaned for the life time of the exhibition by the National Museum, Dublin.

Amongst the guests were Mrs Anne Loane of Ballinamallard, granddaughter of Everina Sinclair and Captain Robert Lowry of Fivemiletown, great grandson of Mary Montgomery. □

Friends of the Museum and other guests assembled at the Museum on a sunny June evening to attend the launch of the *Crafted by Candlelight* exhibition. Dr Paul Larmour, author of "The Arts and Crafts Movement in Ireland" opened this unique exhibition on Thursday 10 June 1999.

The exhibition included examples of crafts and industries which flourished a century ago in Donegal and in Fivemiletown, Co. Tyrone, as part of the Irish Arts and Crafts movement. Dr Larmour explained that Mary Montgomery, wife of the local landowner set up the Fivemiletown metal work industry for young men in the area. It was highly successful and continued to thrive until the beginning of the First World War.

McClellan, Flora McDonnell and Angela Antrim.

This exhibition was complemented by a series of free school and one public lecture given by Mr. Theo Snoddy.



Right: At the launch of the exhibition of the UTV Art Collection are from left, Mr Desmond Smyth, managing director of UTV, who opened the exhibition, Mr Derrick Nixon, chairman of Fermanagh District Council, Helen Lanigan Wood, museum curator, Bronagh Cleary, development officer, and Mr Theo Snoddy, UTV art adviser. Photograph courtesy of Kenneth McNally.



*Fermanagh established its own lace industry to provide  
gainful employment and relieve poverty...*

# Inishmacsaint Lace

Fermanagh had its own lace industry - Inishmacsaint lace- set up, like the better known Clones and Carrickmacross lace industries in Monaghan, to provide gainful employment and relieve poverty. It was Dean Tottenham, the Church of Ireland rector of Inishmacsaint parish near Derrygonnelly who established the project, enlisting the help of his wife and sister-in-law who had previously assisted

their mother in running a successful lace school in Tynan, Co. Armagh. Modelled on Venetian and Spanish lace, Inishmacsaint needlepoint lace was made in two distinctive styles, one flat, the other raised over cord or horse hair padding.

The project began in 1865 and within a few years Lizzie Maclean and her sister were holding regular lace classes in the gate lodge of Benmore rectory and the upstairs room of the old dispensary at Derrygonnelly. Other teachers followed, in particular Miss Eleanor (Ellen) Hassard (c.1871-1961) who won a scholarship to study design at the Dublin Metropolitan School of Art and return to her native Fermanagh to take over the running of Inishmacsaint lace. Remembered as an excellent teacher, designer and businesswoman, she maintained the earlier marketing successes of Inishmacsaint lace and continued selling in America, England and Ireland until the demand for hand - made lace largely ceased after the First World War. □

**The Museum is currently designing a new permanent display of selections from our lace collection, with particular reference to Inishmacsaint lace. We are very anxious to buy or borrow examples of Inishmacsaint lace. If you can help us please contact the Curator Helen Lanigan Wood or Museum Development Officer Jayne Olphert on Tel: 02866 325000 or fax 02866 327342.**

**WOULD YOU  
LIKE<sup>TO</sup>  
JOIN THE  
FRIENDS  
OF FERMANAGH  
COUNTY MUSEUM?**

Membership information is available  
from the museum at:

**ENNISKILLEN CASTLE**  
Castle Barracks, Enniskillen  
Co Fermanagh, BT74 7HL  
Tel: 028 66 325000  
E-mail: [castle@fermanagh.gov.uk](mailto:castle@fermanagh.gov.uk)

## Friends NEWS

This year the Friends of Fermanagh County Museum elected a committee to direct their affairs and to contribute in a more active way to promoting the work of the Museum. The committee was formed during a general Friends meeting held on January 28th 1999. The committee, chaired by Mr Peter Duffy then met on 11th March 1999 at which meeting the draft constitution for the group was discussed and amended. A sub-committee was formed at this meeting to organise the Friends' annual trip. The next Friends committee meeting will be held on Thursday 18th November 1999.

The Museum would like to take this opportunity to thank the Friends Association for their continued support over the past year, and in particular for their financial contribution to this year's artist in residence. The sculpture resulting from this project will be launched early in 2000. □

# A back Trip in Time

Belleek,  
Ballyshannon,  
the Erne  
and  
Assaroe Lakes.

A happy assorted band of over 30 Friends of Fermanagh County Museum gathered for this year's annual outing beginning at Belleek pottery on Saturday morning 11th September 1999. Friend and local historian Joe O'Loughlin, assisted by Development Officer Bronagh Cleary, took us around his homelands: the former kingdoms of Mulleek and Toura. These are today's Belleek, Ballyshannon with the Erne and Assaroe Lakes between.

that had been oak forest and salmon waterfalls before the Ballyshannon power station was built in the 1950s. Football goalposts had poked forlornly above the water for years after. Some fine houses and gardens now lie under water, and no longer do shoals of salmon and sea trout leap the falls.

There was a dilemma in all this. An area of rich natural beauty has been changed drastically to make a hydroelectric scheme that had

and its ancient harbour where Bronagh told us about the sailing ships that once called there, feeling their way in over the sandbars of the estuary. Behind her as she spoke were tall sturdy stone buildings that once were warehouses on the docks. From upstream came the now tamed Erne river no longer jumping the long gone falls.

Lunch at the Carlton Hotel,

each named after a local townland and supplied by Belleek Charter Cruising. They were variously helmed by Friends wearing traditional nautical headgear. Armed with written explanations from Joe, we explored the river upstream to the Broad Lough, the sights including Lonesome Island, scene of a sad burial in the aftermath of the 1798 rebellion. Back ashore there was time for a quick run around the ExplorErne

Joe stood on a road side bank and showed us an area that had been oak forest and salmon waterfalls before the Ballyshannon power station was built in the 1950s.

after another look at the Assaroe River from the south bank, was excellent, and we had an opportunity to look over historic photographs in a

Centre's exhibition which laid out the Lake's history, before another cup of tea or coffee and the road home. We called on the way into a draper's shop in Belleek (where else) to buy a copy of Joe's book - "West Fermanagh Kingdoms of Mulleek and Toura."

In all this trip to an area of our own County was different, very worthwhile and very greatly enjoyed by all.

Contributed by  
Michael Clarke,  
Committee Member,  
Association of Friends of  
Fermanagh County Museum.

*Left: The Association of Friends of Fermanagh County Museum about to embark on a boat trip of Lower Lough Erne on their annual outing in September 1999. Photograph courtesy of Michael Clarke.*



After coffee and a fascinating presentation on the creation of Belleek pottery, Joe's convoy assembled for the drive out of Belleek along the north shores of Assaroe. Here Joe stood on a road side bank and showed us an area

great economic benefits. Was it worth the cost, and, if the answer is no, would we really be willing to be without the benefit of electricity in homes and work places?

We went on to Ballyshannon

collection begun by the late Horace Fleming. His black and white photographs of boats on Ballyshannon strand in the 1940s were compelling.

Then afloat we all went, in three large motor cruisers,



## **ENNISKILLEN CASTLE**

Castle Barracks, Enniskillen, Co Fermanagh, BT74 7HL.

Tel: 028 66 325000, Fax: 028 66 327342

E-mail: [castle@fermanagh.gov.uk](mailto:castle@fermanagh.gov.uk)

Newsletter edited by Jayne Olphert and designed by Neil Armstrong

### **FRONT COVER**

*A J/24 keel boat "Jeriatrix" from Lough Erne Yacht Club on display during 'Erne Sailing' on Bank Holiday Monday 31<sup>st</sup> May 1999.*

### **BACK COVER**

*An Enniskillen High School student studies a painting from the collections of Ulster Television. The art exhibition opened on 8th September 1999.*